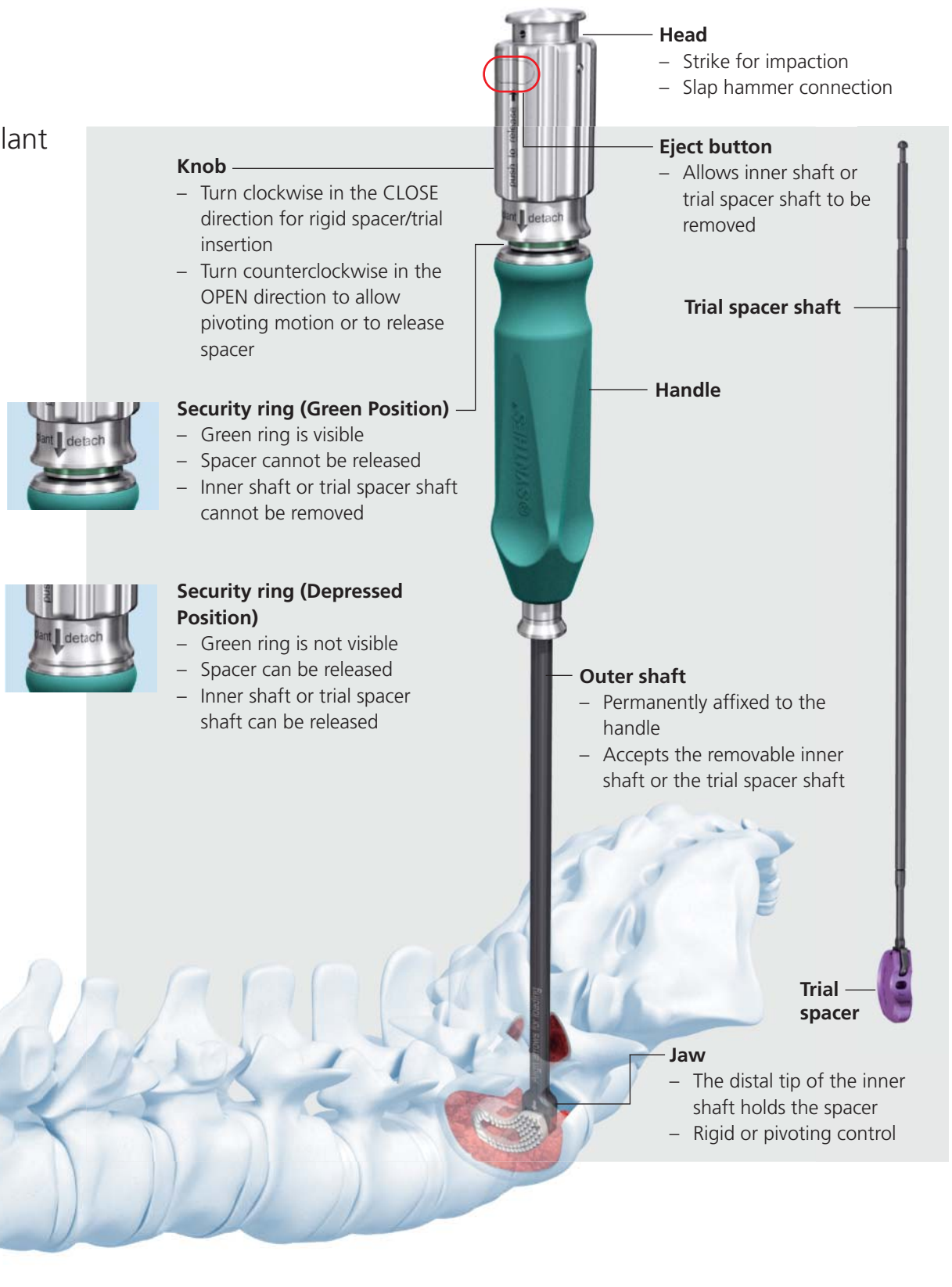


T-PAL. Transforaminal posterior atraumatic lumbar spacer system.

Pivoting Implant Applicator

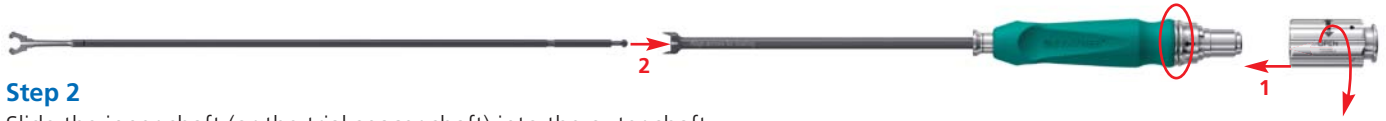


T-PAL Pivoting Implant Applicator

Assembly—thread, click

Step 1

Thread the knob into the handle counterclockwise in the OPEN direction until the security ring is in the Depressed Position.



Step 2

Slide the inner shaft (or the trial spacer shaft) into the outer shaft, aligning the flats, until it clicks into place.

Result

The pivoting implant applicator jaw is now fully open and ready to pick up a spacer.

Note: Since each trial spacer is permanently affixed to its own inner shaft, this is the final assembly step for trial sizing.

Pick up spacer—fully open, align arrows, close

(required for spacers, not for trials)

Step 1

Ensure that the applicator jaw is fully open by turning the knob counterclockwise in the OPEN direction until the security ring is in the Depressed Position.



Step 2

Align the arrows for loading.



Step 3

Turn the knob clockwise in the CLOSE direction until it stops and the security ring is in the Green Position.

Result

- The spacer is now securely affixed to the applicator in the Rigid Position.
- When in the Green Position, the security ring is designed to prevent unintentional release of the spacer.

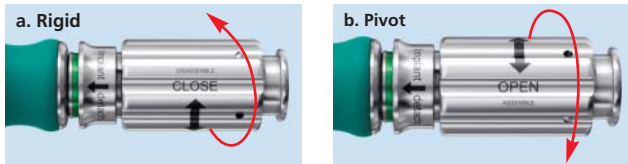
Rigid vs. Pivoting

Note:

Security ring in the Green Position.

a. Rigid—Turn the knob clockwise in the CLOSE direction.

or
b. Pivot—Turn the knob counterclockwise in the OPEN direction.



Release spacer

Step 1

Hold the security ring in the Depressed Position.

Step 2

Turn the knob counterclockwise in the OPEN direction until it stops. Jaw is fully open and the spacer is released.



Slap hammer—remove trial (or spacer)

Note:

To remove the spacer or trial, the applicator should be set to the PIVOT position.

Step 1

Slide the slap hammer onto the head of the applicator.



Disassembly, remove inner shaft or trial spacer shaft—knob fully open, eject button

Step 1

Hold the security ring in the Depressed Position, and turn the knob counterclockwise in the OPEN direction until it stops.



Step 2

Press and hold the eject button while removing the inner shaft or trial spacer shaft.



Disassembly, complete tool disassembly—remove inner shaft/trial spacer shaft, unthread

Step 1

Remove the inner shaft or trial spacer shaft (see steps above)



Step 2

Unthread the knob by turning it clockwise in the CLOSE direction.

Quick Reference Guide

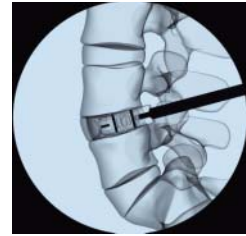
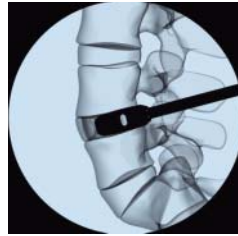
Applicator action

Trial

Spacer

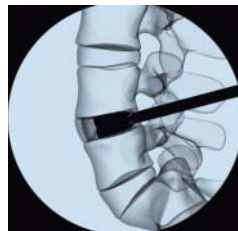
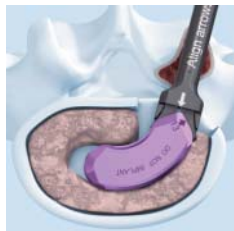
INSERT (Rigid)

- Security ring in the Green Position
- Turn the knob clockwise in the CLOSE direction



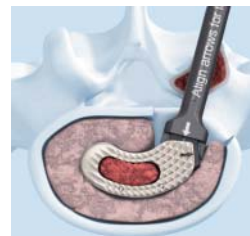
POSITION (Pivoting)

- Security ring in the Green Position
- Turn the knob counterclockwise in the OPEN direction



FINAL PLACEMENT (Release)

- Verify final placement
- Release spacer (this step does not occur during trial sizing):
 - Security ring in the Depressed Position
 - Continue turning the knob counterclockwise in the OPEN direction until it stops



Please refer to T-PAL package insert for complete list of indications, contraindications, precautions and warnings.



Synthes Spine
1302 Wrights Lane East
West Chester, PA 19380
Telephone: (610) 719-5000
To order: (800) 523-0322
Fax: (610) 251-9056

Synthes (Canada) Ltd.
2566 Meadowpine Boulevard
Mississauga, Ontario L5N 6P9
Telephone: (905) 567-0440
To order: (800) 668-1119
Fax: (905) 567-3185

www.synthes.com